

Regulatory Story

[Go to market news section](#)

Jardine Matheson Hldgs Ltd - JAR Block listing Interim Review
Released 10:12 26-Sep-2016

RNS Number : 8031K
Jardine Matheson Hldgs Ltd
26 September 2016

BLOCK LISTING SIX MONTHLY RETURN

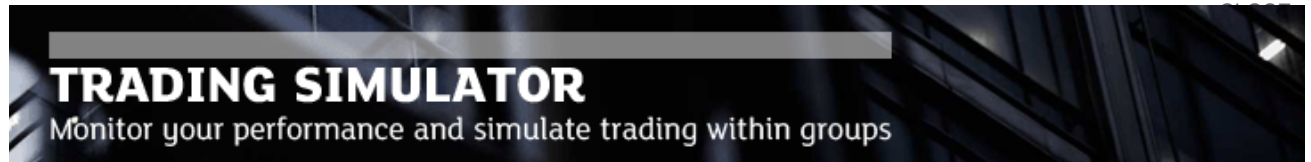
Date: 26th September 2016

Name of <i>applicant</i> :		Jardine Matheson Holdings Limited			
Name of scheme:		The Jardine Matheson International Share Option Plan 2005 (the '2005 Plan') and, its successor plan, The Jardine Matheson Holdings Share-based Long-term Incentive Plan (the 'LTIP')			
Period of return:	From:	25th March 2016	To:	24th September 2016	
Balance of unallotted securities under scheme(s) from previous return:		2,929,930 shares			
<i>Plus:</i> The amount by which the block scheme(s) has been increased since the date of the last return (if any increase has been applied for):		N/A			
<i>Less:</i> Number of <i>securities</i> issued/allotted under scheme(s) during period (see LR3.5.7G):		118,331 shares were allotted under the 2005 Plan and nil under the LTIP			
<i>Equals:</i> Balance under scheme(s) not yet issued/allotted at end of period:		2,811,599 shares			
Name of contact:		Neil M McNamara			
Telephone number of contact:		852 2843 8227			

This information is provided by RNS
The company news service from the London Stock Exchange

END

BLRPGUGGBUPQUBQ



Sponsored Financial Content



- **Weekly update on the financial markets**
[MarketViews](#)
- **Expert financial and political views on Latin America**
[MarketViews](#)
- **Top 10 reasons to invest in income**
[MarketViews](#)
- **Weekly update on the financial markets**
[MarketViews](#)

London Stock Exchange plc is not responsible for and does not check content on this Website. Website users are responsible for checking content. Any news item (including any prospectus) which is addressed solely to the persons and countries specified therein should not be relied upon other than by such persons and/or outside the specified countries. [Terms and conditions](#), including restrictions on use and distribution apply.

©2014 London Stock Exchange plc. All rights reserved